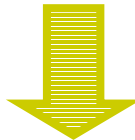
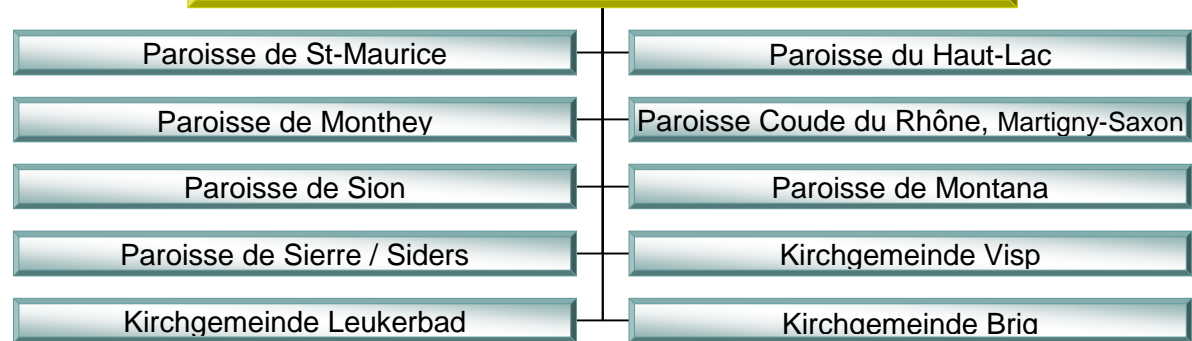


Organigramme EREV – législature 2008-2012

EREV Eglise Réformée Evangélique du Valais



SYNODE

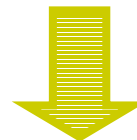
Commission de Gestion : Robert Burri, Psd

Commission prospective financière en standby

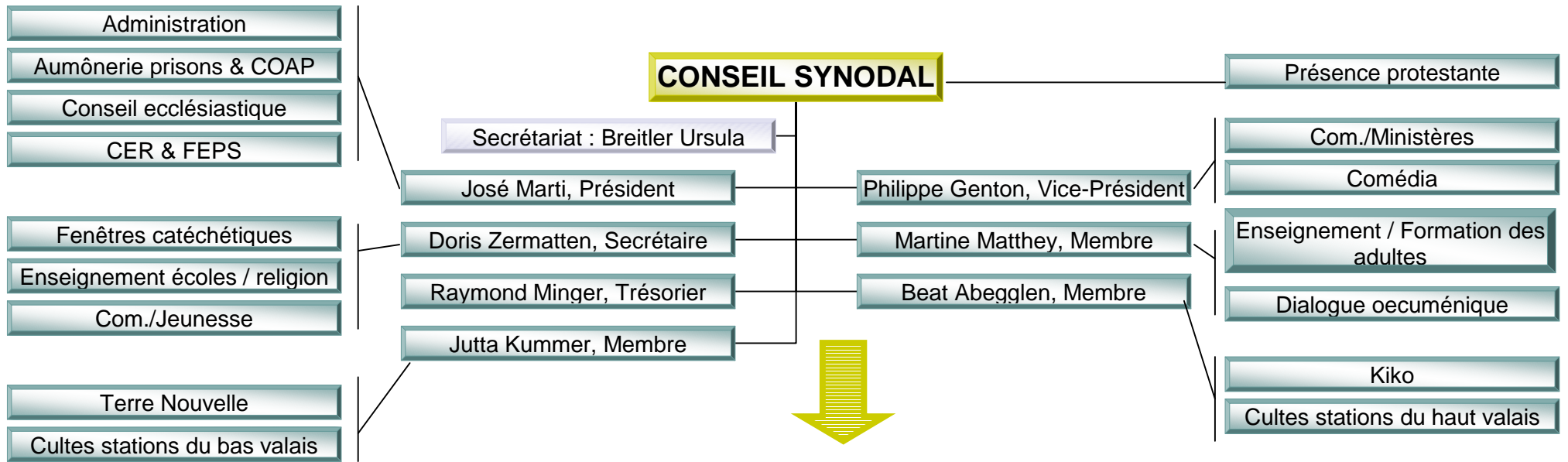
Jean-Pierre Aeschlimann Président

Pierre-François Fauquex Vice-président

Vacant Secrétaire



Organigramme EREV – législature 2008-2012



COMMISSIONS CONSEIL SYNODAL

